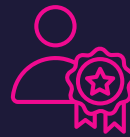




Affiliate



Accredited Affiliate



Associate

Indicative time in profession: 2-5 years



Full Member

Indicative time in profession: 5-10 years



Fellow

Entry requirements (any of the following):

- ✓ Complete the 'Headstart programme' (Online, 13 modules)

[About the Headstart Programme](#)

- ✓ Pass the Cyber EPQ with a grade of **C or lower**

[More About CyberEPQ](#)

- ✓ Graduate from an Academic Partner course

[About Academic Partner Courses](#)

Entry requirements (any of the following):

- ✓ Graduate from a training course from one of our academic accredited affiliates, or any NCSC-approved course

[Which Training Course Qualify?](#)

- ✓ Pass the Cyber EPQ with a grade of **B or higher**

[More About CyberEPQ](#)

AFTER 6 MONTHS IN POST >

- ✓ Complete **L3 Cyber Security Technician** Apprenticeship

[About National Apprenticeships](#)

- ✓ Pass a course/bootcamp from one of our accredited affiliate training providers

[Coming Soon...](#)

- ✓ Complete a competency-based application form

[Competency-Based Applications](#)

Entry requirements (any of the following):

- ✓ Complete the Associate Development Programme (ADP). One year fast-track possible. Corporate Members only.

[Corporate Membership & The ADP](#)

- ✓ Have an active Certified Information Systems Security Professional (CISSP) qualification or an active CompTIA CASP+ certification

[More About CISSP From ISC\(2\)](#)

AFTER 6 MONTHS IN POST >

- ✓ Complete **L4 Cyber Security Technologist** Apprenticeship

[About National Apprenticeships](#)

- ✓ Gain Institute of Cyber Digital Investigator Professionals (ICDIP) **Practitioner** or **Strategist** level

[More About ICDIP](#)

Entry requirements (any of the following):

- ✓ Complete the Full Member Development Programme (FDP). One year fast-track possible. Corporate Members only.

[Corporate Membership & The FDP](#)

AFTER 1 YEAR IN POST >

- ✓ Complete **L6 Cyber Security Apprenticeship (with Integrated Degree)**

After 1 year in post

[About National Apprenticeships](#)

- ✓ Gain Institute of Cyber Digital Investigator Professionals (ICDIP) **Senior Practitioner** or **Senior Strategist** level

[More About ICDIP](#)

Entry requirements (any of the following):

- ✓ **'Senior by Invitation'** (Invitation by the Institute based on career profile/achievements)

- ✓ **Must already have Full Membership** unless endorsed by a CIISec Board Member or Fellow

- ✓ **'Senior by Invitation'** (Invitation by the Institute based on career profile/achievements)

Complete a competency-based application form

[Competency-Based Applications](#)